



Proposed Residential Development  
Land off Cork Lane  
Glen Parva  
Leicestershire

## **Framework Residential Travel Plan**

Cedar Barn, White Lodge,  
Walgrave,  
Northampton,  
NN6 9PY

T: 01604 781811  
F: 01604 781999  
E: [mail@jppuk.net](mailto:mail@jppuk.net)  
W: [jppuk.net](http://jppuk.net)

Proposed Residential Development  
Land off Cork Lane  
Glen Parva  
Leicestershire

Framework Residential Travel Plan

JPP Consulting Ltd., Cedar Barn, White Lodge, Walgrave, Northampton, NN6 9PY

T: 01604 781811

F: 01604 781999

E: mail@jppuk.net

W: jppuk.net

Report Reference R-RTP- R6711PP-01

Date January 2014

Report Originators

Prepared by



Martin Andrews MEng (Hons)

**Project Engineer**

martin.andrews@jppuk.net

Reviewed by



Philip A Brown BEng (Hons) CEng MICE MCIHT MCIWEM CWEM

**Director**

phil.brown@jppuk.net

## Contents

<b>Report section</b>	<b>Principal coverage</b>	<b>Page Number</b>	<b>Revision</b>
<b>1.0</b>	<b>Introduction</b>	4	
1.1	Background	4	
1.2	Instructions	4	
1.3	Site Location	5	
1.4	Proposed Development	5	
1.5	Existing Transport Links	5	
1.6	National Policy	7	
1.7	Benefits	7	
<b>2.0</b>	<b>Scope of the Travel Plan</b>	8	
<b>3.0</b>	<b>Motivations, Aims And Objectives</b>	9	
3.1	Motivations	9	
3.2	Aims	9	
3.3	Objectives	9	
<b>4.0</b>	<b>Targets</b>	10	
4.1	Modal Shift Targets	10	
<b>5.0</b>	<b>Management Strategy</b>	11	
5.1	Responsibility	11	
5.2	Ownership and Handover	11	
<b>6.0</b>	<b>Measures</b>	12	
6.1	Residential Travel Plan Strategy	12	
6.2	Site Design	13	
6.3	Promotion and awareness raising	13	
6.4	Encouraging Public Transport	13	
6.5	Encouraging Walking and Cycling	14	
6.6	Car Sharing	14	
<b>7.0</b>	<b>Marketing Strategy</b>	15	

<b>8.0</b>	<b>Monitoring and Review</b>	16
8.1	Monitoring	16
8.2	Monitor Responsibility	16
8.3	Review	16
8.4	Contingency Measures	17

---

### List of Appendices

---

- A Site Location Plan  
JPP drawing no. R6711PP-TA01
- B Proposed Masterplan  
RG+P drawing no. 7779/005C
- C Local Facilities Plan  
JPP drawing no. R6711PP-TA02
- D Bus Route Map and Timetables
- E Cycle Route Map

## 1.0 Introduction

### 1.1 Background

1.1.1 This Framework Residential Travel Plan will support an outline planning application for a proposed residential development comprising 165 dwellings.

1.1.2 This Travel Plan will set the objectives, targets and outline methods available for achieving the objectives. The method of achieving the objectives and targets will be determined by the house builder and set out in a detailed Travel Plan which will be completed 6 months prior to initial occupation of the development.

### 1.2 Instructions

1.2.1 This Framework Residential Travel Plan (RTP) has been prepared by JPP Consulting Limited acting on behalf of Manor Oak Homes to support an outline planning application for 166 residential dwellings. The benefit of this report is limited to our instructing Client.

### 1.3 Site Location

1.3.1 The proposed residential development is located to the south of Leicester and north of Blaby at land off Cork Lane, Leicester as shown on the location plan below in Figure 1 and enclosed in Appendix A. The proposed development is bound by residential developments to the north and south, Cork Lane to the east and agricultural land to the west.



Figure 1.1 – Site Location (outlined in red)

1.3.2 The proposed development is bound by residential developments to the north and south, Cork Lane to the east and agricultural land to the west.

## **1.4 Proposed Development**

1.4.1 The proposed development will comprise 165 residential dwellings with associated highway infrastructure and public open space. The proposed development layout is shown on the plan enclosed in Appendix B.

### **1.4.2 Proposed Vehicular Access Arrangement**

1.4.2.1 The proposed development will be accessed off Cork Lane. Cork Lane has a width of 5.5m and is bound by 1.8m wide footways on both sides of the carriageway. Cody Road is street lit and subject to a 30mph speed limit. The proposed residential development will be accessed via an extension of cork lane into the development site. The proposed access is shown in Appendix B.

1.4.2.2 In addition to the vehicular access the proposed residential development will provide a pedestrian link to the public footpath which runs parallel to the site's northern boundary.

### **1.4.3 Car and Cycle Parking**

1.4.3.1 Car and cycle parking for the development will be provided in line with guidance set out in the 6Cs Design Guide.

## **1.5 Existing Transport Links**

### **1.5.1 Existing Highway Infrastructure**

1.5.1.1 The existing local highway infrastructure is shown on the plan enclosed in Appendix C.

1.5.1.1 The proposed development will be accessed off Cork Lane. Cody Road has a width of 5.5m and is bound by 1.8m wide footways on both sides of the carriageway. Cork Lane provides connections to Glenville Avenue and West View Avenue which both in turn connect at their eastern end with A426 Leicester Road a primary route which provides the development connections to the centres of Leicester and Blaby. All roads are subject to a 30mph speed limit and are street lit.

### **1.5.2 Pedestrian Facilities**

1.5.2.1 The surrounding roads are typically bound by footways on both sides of the carriageway and generally provide dropped kerbs with occasional tactile paving at the appropriate locations.

1.5.2.2 A metaled bridleway connects Cork Lane with New Bridge Road and Winchester Avenue to the south.

1.5.2.2 Walking distances and the proximity of key facilities is shown on the plan enclosed in Appendix C.

### **1.5.3 Cycle Facilities**

1.5.3.1 There are a number of dedicated cycling facilities within the vicinity including national cycle route number 6 on Cork Lane. The existing cycling facilities within the vicinity of the site are shown in Appendix E.

1.5.3.2 Cycling distances and the proximity of key facilities is shown on the plan enclosed in Appendix C.

### **1.5.4 Bus**

1.5.4.1 The nearest existing bus stops for the proposed development are located Leicester Road approximately 550m from the proposed site entrance. The location of the existing bus stops is shown on the facilities plan enclosed in Appendix C.

1.5.4.2 General bus service frequencies and routes of buses utilising the bus stops are set out in table 3.1 below. Full time table and bus route information is enclosed in Appendix D. The information provided in the tables below and the appendices was correct at the time of publication.

Summary of bus services			
Service	Route	Service Times	Day Time Frequency
84	Leicester - Blaby - Whetstone - Cosby - Broughton Astley – Lutterworth	First ≈ 0630 Last ≈ 2120	Every 10 mins
84A	Leicester - Blaby – Whetstone		
85	Leicester - Blaby - Countesthorpe - South Wigston		

**Table 3.1**

1.5.4.3 The combined 84/84A/85 bus routes will provide residents with a regular bus service to Leicester City Centre and Blaby and therefore offers commuters a sustainable alternative to the private car. Leicestershire County Council and Leicestershire City Council have recently completed bus lane works to the A426 between the Blaby and Leicester. These works will improve journey times for buses therefore increasing the likelihood that buses will be utilised as an alternative to the private car.

**1.5.5 Rail**

3.4.2.1 The nearest railway station is located at approximately 3.1km (1.9miles) from the proposed development South Wigston. The railway station is located on the Birmingham to Peterborough line and is served by occasional trains travelling between Birmingham and Leicester. The nearest full service train station is Leicester Station located approximately 6.5km (4.0 miles)

3.4.2.2 The railway stations will offer opportunities for commuters making long distance journeys to travel my more sustainable forms of transport.



## **1.6 National Policy**

- 1.6.1 *Creating Growth, Cutting Carbon: Making Sustainable Local Transport Happen*, the Transport White Paper was published in January 2011 by the Coalition Government. The Document outlines a vision ‘for a transport system that is an engine for economic growth, but one that is also greener and safer and improves quality of life in our communities.’ Consequently, reducing carbon emissions derived from transport together with generating economic growth and contributing to economic vitality. The Localism Agenda is another strong theme with the White Paper supporting local solutions that are tailored to specific needs and behaviour patterns to deliver effective local transport.
- 1.6.2 The priority for local transport, as outlined is to “encourage sustainable local travel and economic growth by making public transport and cycling and walking more attractive and effective, promoting lower carbon transport and tackling local road congestion.
- 1.6.3 The White Paper Chapter 4 is titled Enabling Sustainable Transport Choices. The chapter states that ‘the Government wants to encourage and enable more sustainable transport choices’. The document goes on to explain the “nudge” concept that taps into human behavioural tendencies to encourage “good” choices. Nudge interventions are described as being easy and not forbidding choice and travel planning is listed as an example of such.
- 1.6.4 The National Planning Policy Framework (NPPF) sets out the Government’s policies in respect of transport and development planning.
- 1.6.5 Maximum parking standards are set out in Annex D of the document.

## **1.7 Benefits**

- 1.7.1 The purpose of this travel plan is to promote sustainable transport options to the occupiers of the development, the benefits to the occupier include:
- Improved travel options;
  - Opportunity for a healthier lifestyle; and
  - More vibrant communities.

## **2.0 Scope of the Travel Plan**

- 2.1 This Travel Plan will set the objectives, targets and outline methods available for achieving the objectives. The method of achieving the objectives and targets will be determined by the house builder and set out in a detailed Travel Plan which will be completed 6 months prior to initial occupation of the development.

## **3.0 Motivations, Aims and Objectives**

### **3.1 Motivations**

3.1.1 The motivations for the Travel Plan are:

- To provide sustainable access to facilities required by residents on site;
- To make the proposed development more accessible for residents through the use of sustainable modes;
- To help potential residents to be healthier, fitter and more productive by encouraging exercise; and
- To create a vibrant, pleasant sustainable local community.

### **3.2 Aims**

3.2.1 The overall aim of the Residential Travel Plan is:

*“To reduce the dependency of residents on single occupancy car journeys by encouraging increased use of more sustainable forms for transport.”*

### **3.3 Objectives**

3.3.1 The following specific objectives form the basis of this Framework Residential Travel Plan:

- To reduce the proportion of single occupancy car journeys by encouraging increased use of more sustainable forms for transport;
- To promote the health and environmental benefits of using more sustainable forms of transport; and
- To assist residents in making informed choice about their mode of travel to and from the development.

## 4.0 Targets

### 4.1 Modal Shift Targets

4.1.1 The proposed residential development will aim to achieve a 10% reduction in single occupancy vehicle journeys to work. A 10% modal shift in single occupancy vehicle trips will be measured during the morning (0800-0900) and evening (1700-1800) peak hours and will be measured against the latest available census data at the time of first occupation. The current method of travel to work data has been obtained from the 2011 Census for the Saxondale ward which includes the development site and is shown in table 4.1 below.

<b>Method of Travel to Work Resident Population – Saxondale Ward 2011 Census</b>	
Mode	Percentage
Driving a Car or Van	73.6%
On Foot	8.3%
Bus, Minibus or Coach	6.5%
Passenger in a Car or Van	5.7%
Bicycle	4.0%
Train	0.8%
Motorcycle, Scooter or Moped	0.7%
Taxi	0.3%

**Table 3.3.1**

4.1.2 It is proposed that a 10% modal shift will be achieved within 5 years of first occupation and that the target will be phased during this period. It is not intended to prioritise one form of sustainable transport above another. Hence, no targets will be identified for modal split on more sustainable forms of transport. The proposed target and phasing for the proportion of peak hour single occupancy vehicle journeys to work is set out in table 4.2 below based on the 2011 Census data which is the latest data set available for use.

<b>Proposed Mode Shift Target</b>			
Mode of Travel	End of Year1	End of Year3	End of Year5
Car (Driver)	72.1%	69.2%	66.2%

**Table 4.2**

## **5.0 Management Strategy**

### **5.1 Responsibility**

5.1.1 A Travel Plan Coordinator (TPC) will be appointed for this development that will have prime responsibility for setting up and administration of the Residential Travel Plan. The TPC will be named and contact details provided to Leicestershire County Council. A TPC will be appointed 6 months prior to the first occupation of the proposed development.

5.1.2 It is not considered that a full time TPC is appropriate for this level of development, it is proposed that this role will be carried out initially by a senior member of the development team on a part time basis as and when required, with support provided by a member/members of the site sales / marketing team.

5.1.3 The TPC will liaise with Leicestershire County Council, and Travel Plan Co-ordinators located in the local area.

5.1.4 The Travel Plan Coordinator's duties will include:

- Provision of travel information to all new residents;
- Co-ordination with other Travel Plan Coordinators in the area to identify any areas for joint working or "added value";
- Liaise with key stakeholder including bus/rail operators, Leicestershire County Council, and Blaby District Council;
- Keeping all public transport and database records up to date;
- Training sale staff on the principles of sustainable travel and personalised journey planning techniques to ensure the sustainable travel initiatives is widely promote;
- Preparing and maintaining publicity for the RTP;
- Providing travel information packs;
- Update the RTP to take account of latest developments, i.e. notifying residents changes to bus services etc; and
- Ensuring that monitoring of the targets is completed at the appropriate times.

5.1.5 In addition to the above, the TPC will be integral to the process of reviewing the effectiveness of the Travel Plan.

### **5.2 Ownership and Handover**

5.2.1 In the short term the ownership of the residential travel plan lies with the applicant / house builder until the end of the 5 year period and initial monitoring provided that targets are achieved during this time.

5.2.2 In the long term, the ownership of the residential travel plan will ultimately rest with the future residents of the proposed development, through either appropriate resident committees or a community trust.

## 6.0 Measures

### 6.1 Residential Travel Plan Strategy

6.1.1 This chapter sets out the travel plan measures which are available to the house builder in order to achieve the targets set out within this Travel Plan. The exact measures to be implemented will be determined by the house builder when the detailed Travel Plan is written. Table 6.1 sets out a summary of some of the available measures. This list should not be considered exhaustive as there are many ways available to achieve the modal shift required.

Residential Travel Plan Measures
<b>Site Design</b>
<ul style="list-style-type: none"><li>• Permeability of site for pedestrians and cyclists</li><li>• Parking located off road to minimise intrusion and avoid dominance of the site</li></ul>
<b>Promotion and awareness raising package</b>
<ul style="list-style-type: none"><li>• Welcome travel packs, including information on walking and cycling routes, public transport services, car sharing and low emission travel and vehicle choices. Also information on local services.</li><li>• Sales staff to be briefed on the site travel plan.</li><li>• Travel plan information included in the marketing material associated with the development.</li><li>• Information pack on the health and environmental benefits of travelling via more sustainable forms of transport.</li></ul>
<b>Encouraging public transport</b>
<ul style="list-style-type: none"><li>• Promotion of bus travel through the Residents Welcome Pack.</li></ul>
<b>Encouraging Walking and Cycling</b>
<ul style="list-style-type: none"><li>• Provide cycle parking for residents</li><li>• Adequate footpaths provide throughout the development</li><li>• Promotion of the 'Buddi System' through mytravelshare.org</li><li>• Promotion of the idea of a walking school bus to local primary school</li></ul>
<b>Car use</b>
<ul style="list-style-type: none"><li>• Promotion of the nationwide car sharing scheme</li><li>•</li></ul>
<b>Table 6.1</b>

6.2 The above travel plan measures are described in more detail below describing how these measures could be implemented if they are selected as a viable method to achieve the modal shift required.

## **6.2 Site Design**

- 6.2.1 The site layout has been designed to encourage and promote the use of more sustainable forms of transport. The pedestrian and cycling network integrates well with the surrounding footways and cycle routes offering good access to main roads and bus stops.
- 6.2.2 Parking standards are applied to the site in line with current guidance and therefore designed to encourage use of more sustainable forms of transport.

## **6.3 Promotion and awareness raising**

- 6.3.1 The onsite sales team will be trained to promote the sustainability and travel plan principles of the site and will be responsible for letting prospective residents know about them. The sales team will also be responsible for issuing new residents with their welcome pack. The information contained in the welcome pack will help to put the residents in a better position to make informed choices about how they choose to travel to and from the development. The pack will include travel and transport options available to new residents and could include promotional material and leaflets comprising of:

- Local bus timetables;
- Leaflets on responsible car use and clean fuel vehicles;
- Promotional material on car sharing and matching services including details regarding how to access and register;
- Local walking and cycling maps illustrating links to and from the site and within the local vicinity;
- Details of local amenities, e.g. corner shops, supermarkets, doctors, dentists and educational facilities;
- Details of the travel plan coordinators and travel plan forums/residential steering group; and
- Contact details for the Travel Plan Co-ordinator.

## **6.4 Encouraging public transport**

- 6.4.1 The travel plan co-ordinator will promote bus travel through the dissemination of bus travel information within the Residents Welcome Pack.

## **6.5 Encouraging Walking and Cycling**

- 6.5.1 A Budi system where walkers and cyclist can join people making a similar route will be promoted. A WalkBUDi (<https://walkbudi.liftshare.com/>) and BikeBUDi (<https://bikebudi.liftshare.com/>) websites are available as part of the Liftshare network. The BUDi system allows people to look for other people to share a walking or cycling journey. Residents will be encouraged to make use of this service (through promotional material distributed in the residential welcome packs.
- 6.5.2 A walking bus could be established for residents of the development to the local primary school. A walking school bus involves a group children walking with at least 2 two adults. This idea can be promoted to the residents as part of the welcome packs and discussed at the travel plan forums. A walking bus could result in fewer car journeys and a healthier lifestyle.

## **6.6 Car Sharing**

- 6.6.1 Car sharing will be promoted to residents of the development through the national website Liftshare [www.liftshare.com](http://www.liftshare.com). This website provides a car sharing database for United Kingdom where users can search for and offer lifts. Car sharing could be encouraged for the development through the resident's welcome packs.

## **7.0 Marketing Strategy**

7.1 Marketing and advertising of the travel plan shall be undertaken by the house builder's sales and marketing team at the site sales office. They will be trained to promote the sustainability and travel planning principles

7.2 The following could be used as communication tools

- Travel Plan notice Board;
- Quarterly Newsletters;
- Welcome packs;
- Dissemination of bus time tables and local cycle routes;
- Setting up of the travel plan forum;
- Monthly Email bulletins to residents



## **8.0 Monitoring and Review**

### **8.1 Monitoring**

8.1.1 It is essential that the impacts of the Travel Plan and the benefits achieved are continuously monitored to:

- Identify which aspects of the Travel Plan have worked and not worked;
- Identify if the targets are being met; and
- Identify changes need which may need to be implemented to achieve the Travel Plan targets.

8.1.2 It is therefore important that the Travel Plan is considered a 'living' document evolving to provide the best forms of encouragement to residents of the development.

8.1.3 It is proposed that the Travel Plan will be monitored as follows:

- An initial travel mode survey shall be undertaken within the first 3 months following first occupancy to observe the quantity of single occupancy vehicle trips.
- Subsequent travel mode surveys will be completed annually for a period of 5 years.

8.1.4 The initial travel mode survey and subsequent annual monitoring will be completed in line with best practice guidance. The methodology of the survey will be agreed in advance between the developer and Leicestershire County Council whose approval shall not be unreasonably withheld.

### **8.2 Monitoring Responsibility**

8.2.1 The Travel Plan Coordinator will be responsible for undertaking the monitoring aspect of the travel plan for the site. Details of the Travel Plan Co-ordinator will be passed to Leicestershire County Council.

### **8.3 Review**

8.3.1 The findings of the monitoring and progress towards the target modal shift will be reported by the travel plan coordinator and the house builder to Leicestershire County Council. In addition, the findings will be reported back to the residents via appropriate forms and dissemination methods, such as community newsletters.

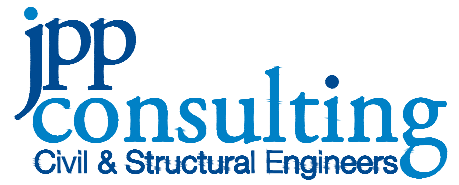
8.3.2 The travel plan coordinator will liaise with Leicestershire County Council over the monitoring process. More specifically will constantly review and adapt the travel plan over time, with the introduction of new measures and packages to deliver on-going changes in travel behaviour.

## **8.4 Contingency Measures**

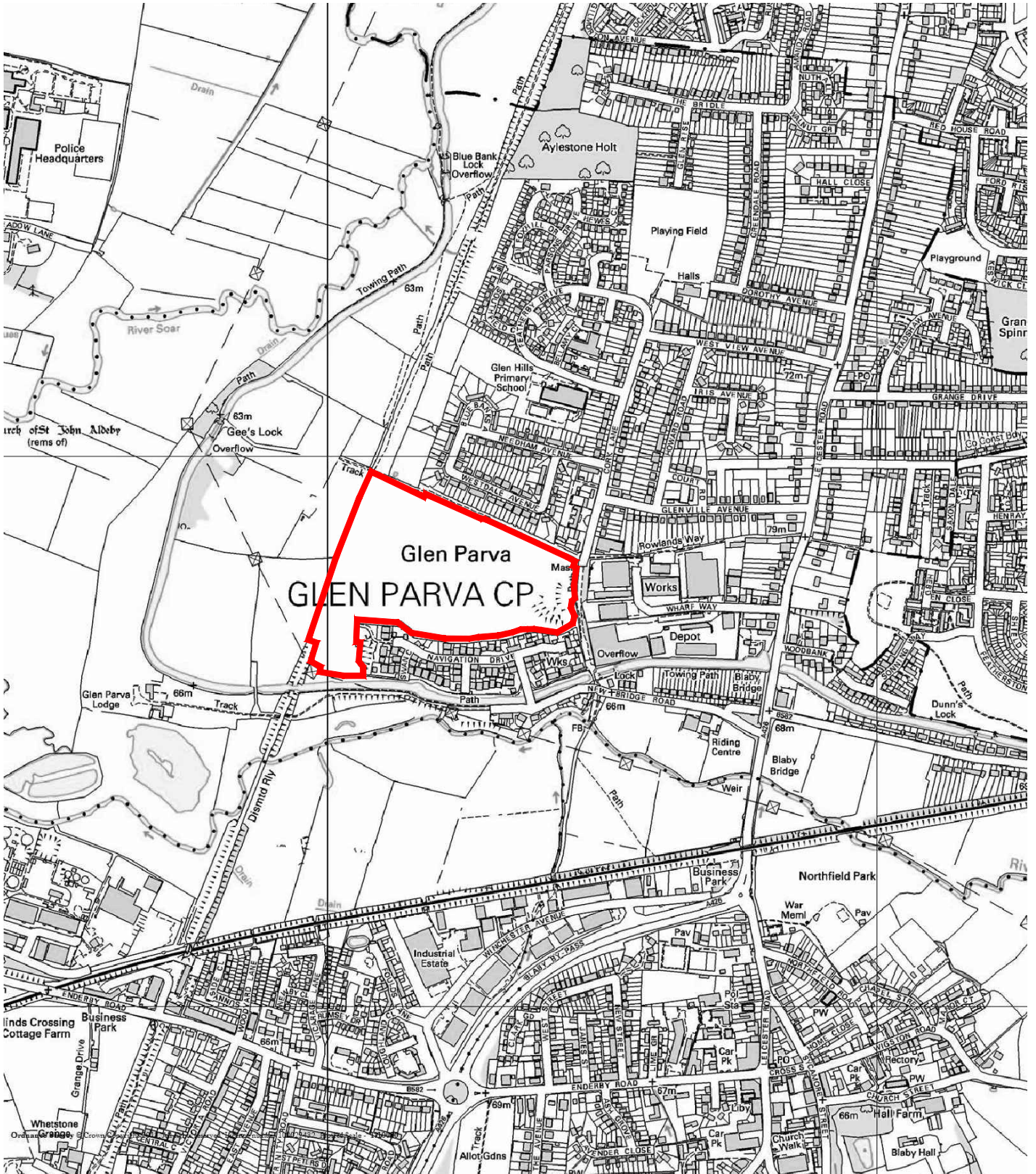
- 8.4.1 The purpose of the annual reviews will be to assess the progress towards modal shift targets. Should the monitoring and review process highlight that the development is not meeting these targets as outlined in section 5 of this report the TPC will work with Leicestershire County Council to identify which Travel Plan measures are effective and those which are not effective. The TPC will identify potential measures that could be incorporated in order that the Travel Plan targets are met. At this stage it is not possible to fully identify these measures but it could include revitalising existing measures or developing new measures.

**Appendix A**  
**Site Location Plan**  
**JPP drawing no. R6711PP-TA01**

Client	MANOR OAK HOMES		Date	OCTOBER 2013
Project	Residential Development		Drawn by	DGB
	Glen Parva, Leicester		Checked by	
Title	Location Plan		Scale at A4	1:10000
Project ref	R6711/PP	Drawing no.	TA01	Revision



T: (01604) 781811 E: mail@jppuk.net  
 F: (01604) 781936 W: www.jppuk.net

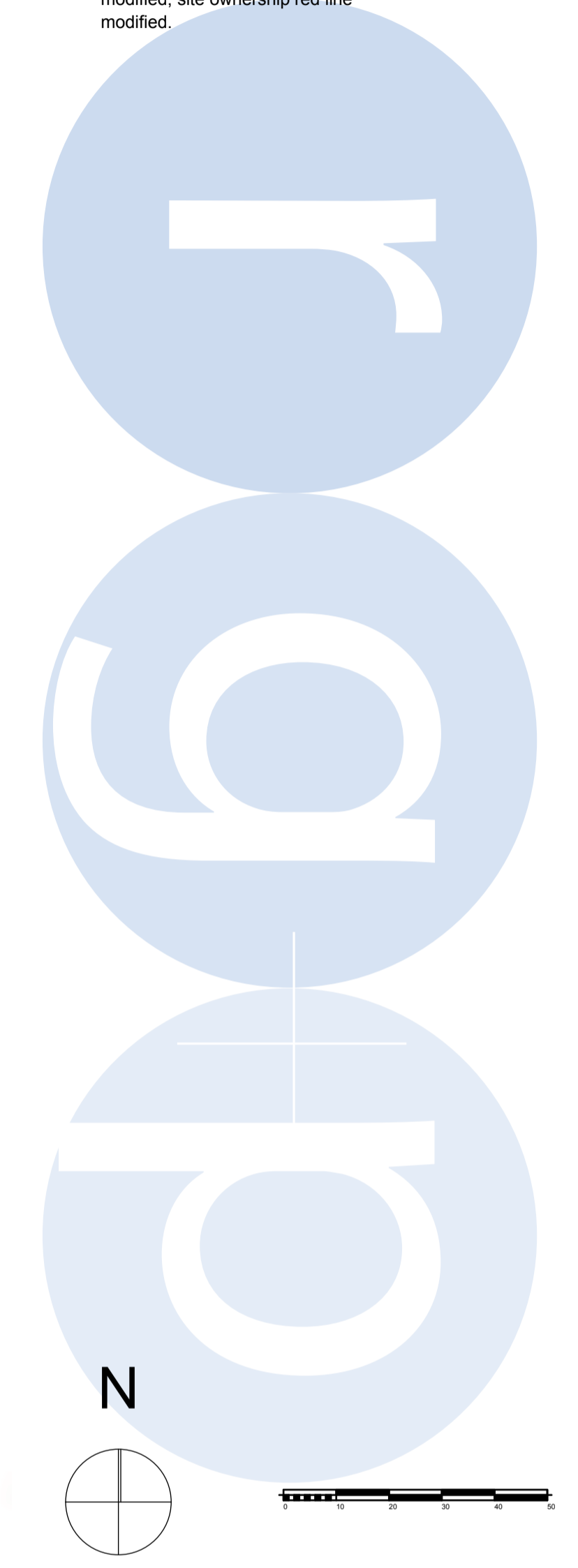


Reproduced from Ordnance Survey explorer map. Licence number 100020449. Ordnance Survey. Crown Copyright. All Rights Reserved.

**Appendix B**  
**Proposed Masterplan**  
**rg+p drawing no. 7779 005C**

Site Area = 10.55 ha  
 Development Area = 6.09 ha  
 POS & Area of Natural Open Space = 4.46 ha  
 Total Number of Dwellings = 165 units  
 Site Density = 27 p/ha

- A Layout modified to reduce development area following comments from engineers & client SA 11.10.13
- B Focal routes introduced to west side of development SA 17.10.13
- C Property against the eastern boundary removed for pedestrian link to Cork Lane; private drives on south and east broken with green space. Additional planting and boundary treatment around car park areas. Play area location modified; site ownership red line modified. SA 26.02.14



Architects · Project Managers · Quantity Surveyors  
 130 New Walk  
 Leicester, LE1 7JA  
 Tel: 0116 204 5800, Fax: 0116 204 5801  
 email: design@rg-p.co.uk, www.rg-p.co.uk

Project:	Residential Development Cork Lane, Glen Pava
Client:	Manor Oak Homes
Sheet title:	Proposed Masterplan
Ref:	7779 / 005 C
Scale:	1:1000 @ A1
Date:	27/09/13
Drawn:	SA
Checked:	RAW

All dimensions to be checked on site. This drawing is the copyright of the Architect, and not to be reproduced without their permission. Ordnance Survey map information reproduced with permission of HMSO Crown Copyright reserved. rg-p Ltd. Trading as rg-p.

**Appendix C**  
**Local Facilities Plan**  
**JPP drawing no. R6711PP-TA02**

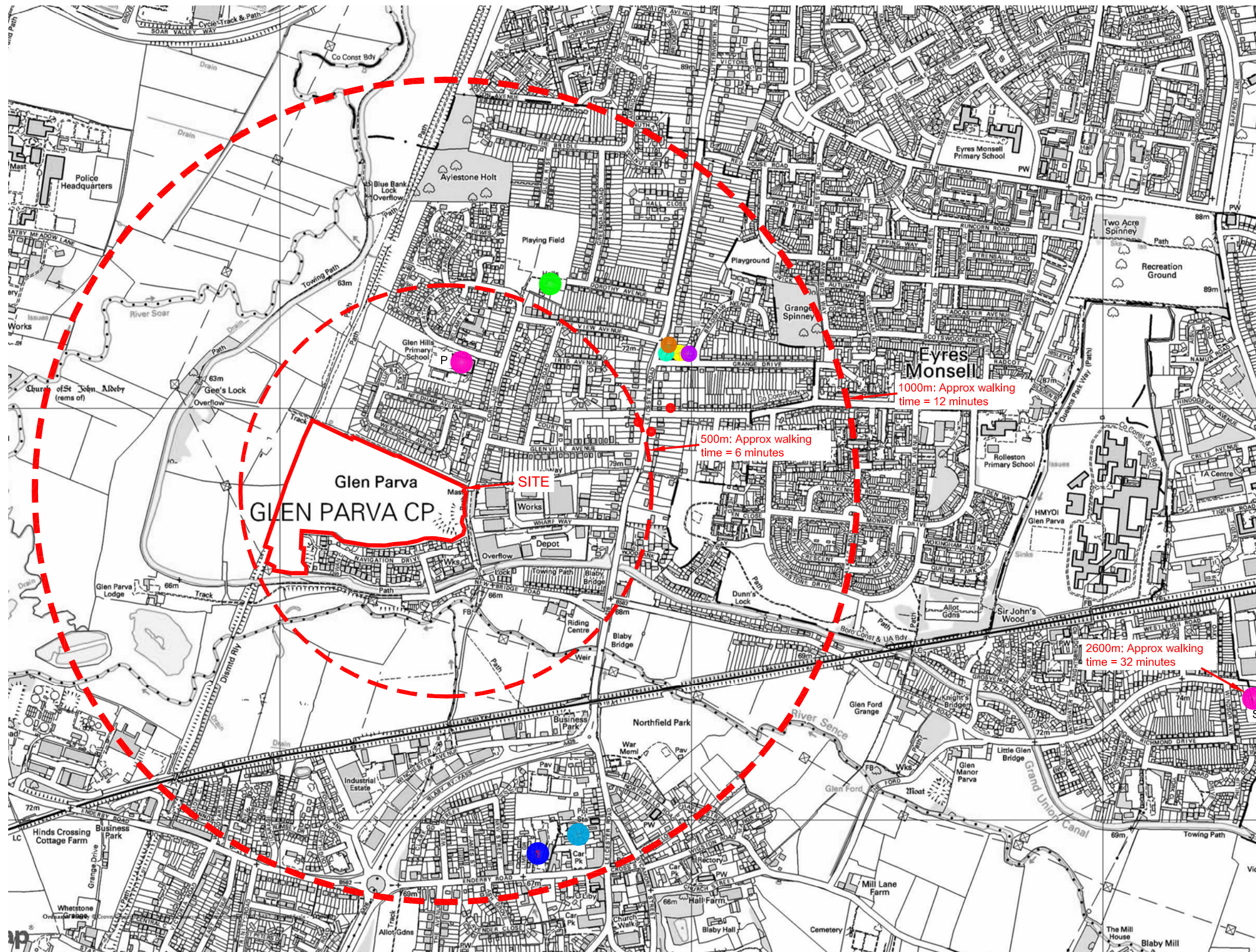


**NOTE**

Walking distances based on a walking speed of 1.4 m/s from 'Providing For Journeys On Foot'

**KEY**

- Site Boundary
- Radius Distance Line
- Bus stops
- Doctors Surgery / Hospital
- Library
- Post Office
- Convenience Store/Supermarket (Closest Shown)
- Pharmacy
- School/College  
P=Primary S=Secondary
- Leisure Facilities  
1 - The Blaby Hotel (Including gym etc.)
- Dentist



Reproduced from Ordnance Survey explorer map. Licence number 100020449. Ordnance Survey. Crown Copyright. All Rights Reserved.

 Civil & Structural Engineers  Cedar Barn, White Lodge, Walgrave, Northampton NN6 9PY  T: (01604) 781811 E: mail@jppuk.net F: (01604) 781999 W: www.jppuk.net	Client <b>MANOR OAK HOMES</b>		
	Project <b>Residential Development Glen Parva Leicester</b>		
	Title <b>Location Plan</b>		
Scale at A3 1:10000	Drawn by <b>DGB</b>	Checked by	Date <b>OCTOBER 2013</b>
Status	Project ref <b>R6711/PP</b>	Drawing no. <b>TA02</b>	Revision



**Appendix D**  
**Bus Route Map and Timetables**

# Main bus routes in Greater Leicester

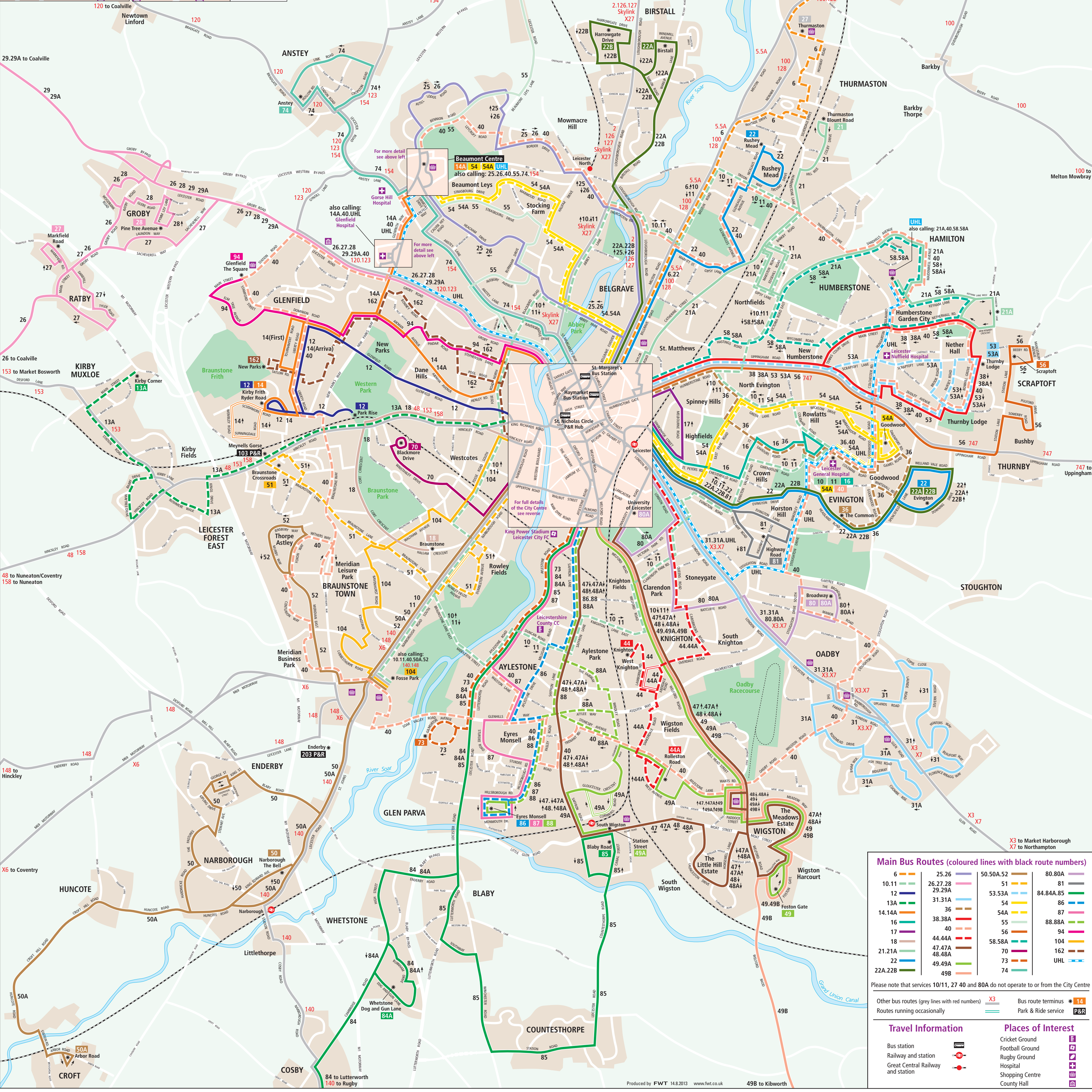
**Glenfield Hospital**

**Leicester Leys Leisure Centre**

**Beaumont Centre**

**Stop Services**

1	not in use
2	14A, 40, UHL
3	25, 55, 74
4	54, 54A, 154
5	Tesco Free Bus
6	74, 154
7	26, 40, 55



**Main Bus Routes (coloured lines with black route numbers)**

6	25.26	50.50A.52	80.80A
10.11	26.27.28	51	81
12	29.29A	53.53A	84.84A.85
13A	31.31A	54	86
14.14A	36	54A	87
16	38.38A	55	88.88A
17	40	56	94
18	44.44A	58.58A	104
21.21A	47.47A	70	162
22	48.48A	73	UHL
22A.22B	49.49A	98	

Please note that services 10/11, 27 40 and 80A do not operate to or from the City Centre

Other bus routes (grey lines with red numbers) X3 Bus route terminus P&R  
Routes running occasionally Park & Ride service

**Travel Information**

- Bus station
- Railway and station
- Great Central Railway and station

**Places of Interest**

- Cricket Ground
- Football Ground
- Rugby Ground
- Hospital
- Shopping Centre
- County Hall





**Leicester - Blaby - Whetstone**  
**Leicester - Blaby - Countesthorpe**

**84A**  
**85**

**Sunday and Bank Holiday Monday**

Route Number	85	84A	then	85	84A	85	84A	85	
			at	every	30	mins			
Leicester, Charles Street CB	0945	1015	these	45	15	1645	1715	1745	
Aylestone Road / Grace Road	0955	1025	mins	55	25	until	1655	1725	1755
Blaby, opp Social Centre	1009	1039	past	09	39	1709	1739	1809	
Countesthorpe, Square	1020	---	each	20	--	1720	---	1820	
Whetstone, Dog & Gun Lane	---	1048	hour	--	48	---	1748	---	

**Lutterworth - Broughton Astley - Cosby - Whetstone - Blaby - Leicester**  
**Whetstone - Blaby - Leicester**  
**South Wigston - Countesthorpe - Blaby - Leicester**

**84**  
**84A**  
**85**

**Monday to Friday**

Route Number	85	84	85	84	85	84	85	84A	84	85	84	84A	85	84	84A
Lutterworth, High Street	---	---	---	---	---	---	---	---	0635	---	---	---	---	---	---
Lutterworth, Coventry Rd/Red Arrow	---	---	---	---	---	---	---	---	0640	---	---	---	---	---	---
Lutterworth, George Street	---	---	---	---	---	---	---	---	0648	---	---	---	---	---	---
Dunton Bassett, Coopers Lane	---	0543	---	0608	---	0633	---	---	0658	---	---	---	---	0746	---
Broughton Astley, Red Admiral	---	0547	---	0612	---	0637	---	---	0701	---	0721	---	---	0751	---
Broughton Astley, Bulls Head	---	0554	---	0619	---	0644	---	---	0708	---	0728	---	---	0758	---
Cosby, Village Hall	---	0606	---	0631	---	0656	---	---	0720	---	0740	---	---	0810	---
Whetstone, Dog & Gun Lane	---	0611	---	0636	---	0701	---	0716	0726	---	0746	0756	---	0816	0826
Countesthorpe Road	0549	---	0619	---	0644	---	0659	---	---	0729	---	---	0759	---	---
Countesthorpe, Square	0556	---	0626	---	0651	---	0706	---	---	0736	---	---	0806	---	---
Blaby, Social Centre	0608	0623	0638	0648	0703	0713	0718	0728	0738	0748	0758	0808	0818	0828	0838
Aylestone Road / Grace Road	0619	0634	0649	0659	0714	0724	0729	0739	0749	0759	0809	0819	0829	0839	0849
Leicester, St. Margaret's Bus Stn	0634	0649	0704	0714	0729	0739	0749	0759	0809	0819	0829	0839	0849	0859	0909
Route Number	85	84A	84	85		84A	84	85	84A	84	85		84A	84	85
Lutterworth, High Street	---	---	0805	---		--	35	--	--	05	--		---	1335	---
Lutterworth, Coventry Rd/Red Arrow	---	---	0811	---	then	--	41	--	--	11	--		---	1341	---
Lutterworth, George Street	---	---	0823	---	at	--	53	--	--	23	--		---	1353	---
Dunton Bassett, Coopers Lane	---	---	0833	---	these	--	03	--	--	33	--		---	1403	---
Broughton Astley, Red Admiral	---	---	0836	---	mins	--	06	--	--	36	--	until	---	1406	---
Broughton Astley, Bulls Head	---	---	0843	---	past	--	13	--	--	43	--		---	1413	---
Cosby, Village Hall	---	---	0855	---	each	--	25	--	--	55	--		---	1425	---
Whetstone, Dog & Gun Lane	---	0851	0901	---	hour	21	31	--	51	01	--		1421	1431	---
Countesthorpe Road	0829	---	---	0904		--	--	34	--	--	04		---	---	1434
Countesthorpe, Square	0836	---	---	0911		--	--	41	--	--	11		---	---	1441
Blaby, Social Centre	0848	0903	0913	0923		33	43	53	03	13	23		1433	1443	1453
Aylestone Road / Grace Road	0859	0914	0924	0934		44	54	04	14	24	34		1444	1454	1504
Leicester, St. Margaret's Bus Stn	0919	0929	0939	0949		59	09	19	29	39	49		1459	1509	1519

Route Number	84A	84	85	85	84	85	84	85	84	85	84	85	84	85
		\$	SHol	Sch	\$									
Lutterworth, High Street	---	1405	---	---	1435	---	1505	---	1535	---	1605	---	1635	---
Lutterworth, Coventry Rd/Red Arrow	---	1411	---	---	1441	---	1511	---	1541	---	1611	---	1641	---
Lutterworth, George Street	---	1423	---	---	1453	---	1523	---	1553	---	1623	---	1653	---
Dunton Bassett, Coopers Lane	---	1433	---	---	1503	---	1533	---	1603	---	1633	---	1703	---
Broughton Astley, Red Admiral	---	1436	---	---	1506	---	1536	---	1606	---	1636	---	1706	---
Broughton Astley, Bulls Head	---	1443	---	---	1513	---	1543	---	1613	---	1643	---	1713	---
Cosby, Village Hall	---	1455	---	---	1525	---	1555	---	1625	---	1655	---	1725	---
Whetstone, Dog & Gun Lane	1451	1501	---	---	1531	---	1601	---	1631	---	1701	---	1731	---
Countesthorpe Road	---	---	1504	1504	---	1539	---	1609	---	1639	---	1714	---	1742
Countesthorpe, Square	---	---	1511	1511	---	1546	---	1616	---	1646	---	1721	---	1749
Countesthorpe, College	arr	---	---	1516	---	---	---	---	---	---	---	---	---	---
Countesthorpe, College	dep	---	---	1522	---	---	---	---	---	---	---	---	---	---
Blaby, Social Centre	1503	1513	1523	1529	1543	1558	1613	1628	1643	1658	1713	1733	1743	1801
Aylestone Road / Grace Road	1514	1524	1534	1540	1554	1609	1624	1639	1654	1709	1724	1744	1754	1812
Leicester, St. Margaret's Bus Stn	1529	1539	1549	1555	1609	1624	1639	1654	1709	1724	1739	1759	1809	1827

Route Number	84	84	85	84	85	84	84A	84	85	84A	85	84A	85
Lutterworth, High Street	1705	1745	---	1815	---	1845	---	1915	---	---	---	---	---
Lutterworth, Coventry Rd/Red Arrow	1711	1751	---	1821	---	1851	---	1921	---	---	---	---	---
Lutterworth, George Street	1723	1757	---	1827	---	1857	---	1927	---	---	---	---	---
Dunton Bassett, Coopers Lane	1733	---	---	1837	---	---	---	---	---	---	---	---	---
Broughton Astley, Red Admiral	1736	---	---	1840	---	---	---	---	---	---	---	---	---
Broughton Astley, Bulls Head	1743	---	---	1846	---	---	---	---	---	---	---	---	---
Cosby, Village Hall	1755	---	---	1858	---	---	---	---	---	---	---	---	---
Whetstone, Dog & Gun Lane	1801	---	---	1903	---	---	1952	---	---	2052	---	2152	---
Countesthorpe Road	---	---	1825	---	1916	---	---	---	---	---	---	---	---
Countesthorpe, Square	---	---	1831	---	1922	---	---	---	2022	---	2122	---	2222
Blaby, Social Centre	1813	---	1841	1914	1932	---	2002	---	2032	2102	2132	2202	2232
Aylestone Road / Grace Road	1824	---	1851	1925	1942	---	2012	---	2042	2112	2142	2212	2242
Leicester, Charles Street CB	---	---	---	---	1956	---	2026	---	2056	2126	2156	2226	2256
Leicester, St. Margaret's Bus Stn	1839	---	1905	1940	---	---	---	---	---	---	---	---	---

**Notes:** Sch - Schooldays, SHol - School holidays, \$ - These journeys do not serve Woodmarket or Woodway Road in Lutterworth

## Saturday

Route Number	85	84	85	84	85	84	85	84A	84	85	84A	84	85	84A	84
Lutterworth, High Street	---	---	---	0635	---	---	---	---	0735	---	---	---	---	---	0835
Lutterworth, Coventry Rd/Red Arrow	---	---	---	0641	---	---	---	---	0741	---	---	---	---	---	0841
Lutterworth, George Street	---	---	---	0649	---	---	---	---	0753	---	---	---	---	---	0853
Dunton Bassett, Coopers Lane	---	0627	---	0659	---	0727	---	---	0803	---	---	0832	---	---	0903
Broughton Astley, Red Admiral	---	0631	---	0701	---	0731	---	---	0806	---	---	0836	---	---	0906
Broughton Astley, Bulls Head	---	0638	---	0708	---	0738	---	---	0813	---	---	0843	---	---	0913
Cosby, Village Hall	---	0650	---	0720	---	0750	---	---	0825	---	---	0855	---	---	0925
Whetstone, Dog & Gun Lane	---	0656	---	0726	---	0756	---	0821	0831	---	0851	0901	---	0921	0931
Countesthorpe Road	0634	---	0704	---	0734	---	0804	---	---	0834	---	---	0904	---	---
Countesthorpe, Square	0641	---	0711	---	0741	---	0811	---	---	0841	---	---	0911	---	---
Blaby, Social Centre	0653	0708	0723	0738	0753	0808	0823	0833	0843	0853	0903	0913	0923	0933	0943
Aylestone Road / Grace Road	0704	0719	0734	0749	0804	0819	0834	0844	0854	0904	0914	0924	0934	0944	0954
Leicester, St. Margaret's Bus Stn	0719	0734	0749	0804	0819	0834	0849	0859	0909	0919	0929	0939	0949	0959	1009

Route Number	85	84A	84	85	84A	84	85	84A	84	85	84A	84	85	
Lutterworth, High Street	---	---	05	--	--	35	--	--	1505	---	---	1535	---	
Lutterworth, Coventry Rd/Red Arrow	---	---	11	--	--	41	--	--	1511	---	---	1541	---	
Lutterworth, George Street	---	---	23	--	--	53	--	--	1523	---	---	1553	---	
Dunton Bassett, Coopers Lane	---	---	then	33	--	--	03	--	1533	---	---	1603	---	
Broughton Astley, Red Admiral	---	---	at	36	--	--	06	--	1536	---	---	1606	---	
Broughton Astley, Bulls Head	---	---	these	43	--	--	13	--	1543	---	---	1613	---	
Cosby, Village Hall	---	---	mins	55	--	--	25	--	until	1555	---	---	1625	---
Whetstone, Dog & Gun Lane	---	0951	past	01	--	21	31	--	51	1601	---	1621	1631	---
Countesthorpe Road	0934	---	each	--	04	--	--	34	--	---	1604	---	---	1634
Countesthorpe, Square	0941	---	hour	--	11	--	--	41	--	---	1611	---	---	1641
Blaby, Social Centre	0953	1003		13	23	33	43	53	03	1613	1623	1633	1643	1653
Aylestone Road / Grace Road	1004	1014		24	34	44	54	04	14	1624	1634	1644	1654	1704
Leicester, St. Margaret's Bus Stn	1019	1029		39	49	59	09	19	29	1639	1649	1659	1709	1719

Route Number	84	85	84	85	84	84	85	84	85	84	84	84A	85	84A	85
Lutterworth, High Street	1605	---	1635	---	1705	1735	---	1805	---	1835	1905	---	---	---	---
Lutterworth, Coventry Rd/Red Arrow	1611	---	1641	---	1711	1741	---	1811	---	1841	1911	---	---	---	---
Lutterworth, George Street	1620	---	1650	---	1726	1747	---	1827	---	1847	1917	---	---	---	---
Dunton Bassett, Coopers Lane	1630	---	1700	---	1736	---	---	1837	---	---	---	---	---	---	---
Broughton Astley, Red Admiral	1633	---	1703	---	1739	---	---	1840	---	---	---	---	---	---	---
Broughton Astley, Bulls Head	1640	---	1710	---	1746	---	---	1846	---	---	---	---	---	---	---
Cosby, Village Hall	1652	---	1722	---	1758	---	---	1858	---	---	---	---	---	---	---
Whetstone, Dog & Gun Lane	1658	---	1728	---	1803	---	---	1903	---	---	---	1952	---	2052	---
Countesthorpe Road	---	1706	---	1736	---	---	1825	---	1916	---	---	---	---	---	---
Countesthorpe, Square	---	1713	---	1743	---	---	1831	---	1922	---	---	---	2022	---	2122
Blaby, Social Centre	1710	1725	1740	1755	1814	---	1841	1914	1932	---	---	2002	2032	2102	2132
Aylestone Road / Grace Road	1721	1736	1751	1806	1825	---	1851	1925	1942	---	---	2012	2042	2112	2142
Leicester, Charles Street	---	---	---	---	---	---	1904	1939	1956	---	---	2026	2056	2126	2156
Leicester, St. Margaret's Bus Stn	1736	1751	1806	1821	1840	---	1905	1940	---	---	---	---	---	---	---

Route Number	84A	85
Whetstone, Dog & Gun Lane	2152	---
Countesthorpe, Square	---	2222
Blaby, Social Centre	2202	2232
Aylestone Road / Grace Road	2212	2242
Leicester, Charles Street CA	2226	2256

## Whetstone - Blaby - Leicester Countesthorpe - Blaby - Leicester

84A  
85

### Sunday and Bank Holiday Monday

Route Number	84A	85	then	84A	85	84A	85	84A	
Whetstone, Dog & Gun Lane	0852	---	at	52	--	1552	---	1652	
Countesthorpe, Square	---	0922	these	--	22	---	1622	---	
Blaby, Social Centre	0902	0932	mins	02	32	until	1602	1632	1702
Aylestone Road / Grace Road	0912	0942	past	12	42	---	1612	1642	1712
Leicester, Charles Street CB	0926	0956	each	26	56	---	1626	1656	1726
			hour						

**Appendix E**  
**Cycle Route Map**





Collect the series of six cycling maps  
Latest versions available for download  
at [www.leics.gov.uk/cycling](http://www.leics.gov.uk/cycling)

This map has been prepared in consultation with Leicester Cycle-ability Workshop representing  
bike projects, clubs and organisations supporting cycling across Leicester.

If you would like help in understanding the text on this leaflet  
in an alternative language or require it in a larger font/audio  
format please contact Leicester City Council on  
0116 252 7000. The map section can be enlarged if required.

**Leicester Bikeability**  
Cycle Training

Free child cycle training is on offer for every school in Leicester. Ask your school for details or email [cycletraining@leicester.gov.uk](mailto:cycletraining@leicester.gov.uk)

Free Adult cycle training is also available. See [www.leicester.gov.uk/cycletraining](http://www.leicester.gov.uk/cycletraining)

Commuter cycle training sign up your business and help get more people cycling to work. Email [cycletraining@leicester.gov.uk](mailto:cycletraining@leicester.gov.uk)

Cycle Maintenance Training is on offer for all ages and abilities. Find out more at [www.leicester.gov.uk/cyclechecks](http://www.leicester.gov.uk/cyclechecks)

£5000 Business Grants are available to promote 'sustainable transport' at [www.leicester.gov.uk/4business](http://www.leicester.gov.uk/4business)

What can you do in  
**10 minutes?**

Learn, why not take part in the Leicester 10 Minute Cycle Challenge. Open for 10 minutes anywhere, anytime to get your peddle.

[www.leicester.gov.uk/10minutes](http://www.leicester.gov.uk/10minutes)

# LEICESTER South

**KEY**

- Recommended route
- National Cycle Network
- On-road / Off-road
- On-road surfaced / unsurfaced
- Bridleway
- Pedestrian street / with restricted vehicle access
- Footway where you should walk your bike
- On-road cycle lane
- Bus lane
- One-way
- Railway with station / Level crossing
- Cycle parking
- Traffic crossing
- Police crossing
- School / College / University
- Hospital
- Library
- Park and ride

© Crown copyright and database rights 2012  
Ordnance Survey 1000192864  
The reproduction of this map is a violation of the public right of copyright in the map. It is not to be used for any purpose other than that for which it was originally intended. Ordnance Survey is not responsible for any loss or damage arising from the use of this map.

**LOOK OUT FOR THESE SIGNS**

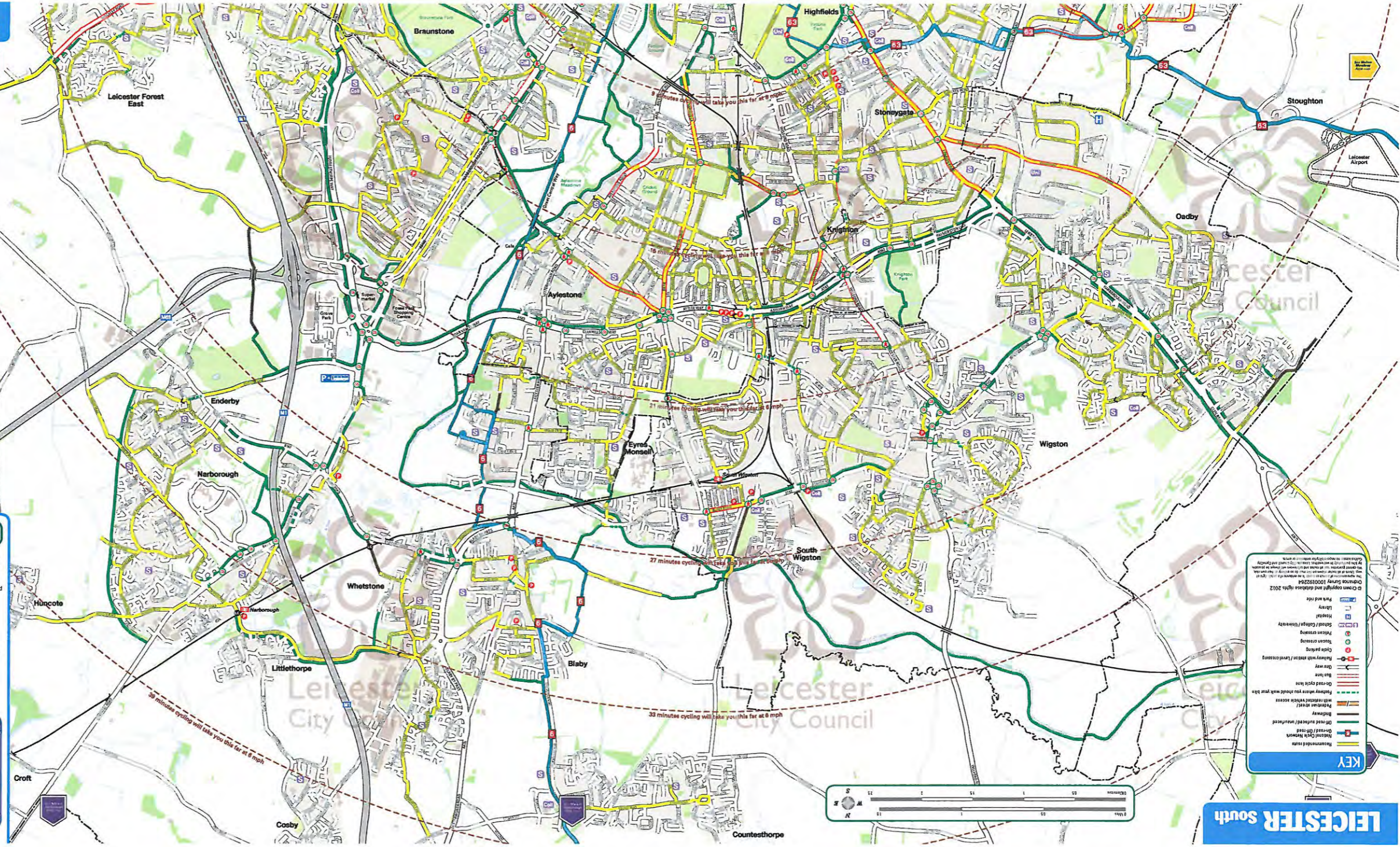
- Shared route for cyclists and pedestrians together
- Route for use by cyclists only
- Caution - cycle route ahead
- No cycling
- With-flow cycle lane ahead
- With-flow cycle lane
- Segregated route for cyclists and pedestrians on separate side of path
- Routes recommended for pedal cyclists (usually on road with no special provision)
- Cycle parking
- Direction to cycle parking
- Direction sign showing route recommended for cyclists
- Direction sign for National Cycle Route
- Warning to drivers of cycle lane at junction

**Advanced stop lines**

Some signal-controlled junctions have advanced stop lines which allow cyclists to move into a 'safe area' ahead of motorists.

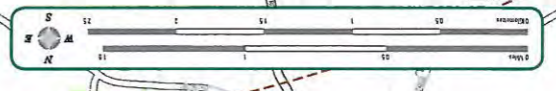
Cyclists must stop at the advanced cycle stop line and only proceed when the lights are green.

Motorists must stay behind the motor vehicle stop line and not obstruct the forward 'safe area'.



**KEY**

- Primary road
- A1
- A2
- A3
- A4
- A5
- A6
- A7
- A8
- A9
- A10
- A11
- A12
- A13
- A14
- A15
- A16
- A17
- A18
- A19
- A20
- A21
- A22
- A23
- A24
- A25
- A26
- A27
- A28
- A29
- A30
- A31
- A32
- A33
- A34
- A35
- A36
- A37
- A38
- A39
- A40
- A41
- A42
- A43
- A44
- A45
- A46
- A47
- A48
- A49
- A50
- A51
- A52
- A53
- A54
- A55
- A56
- A57
- A58
- A59
- A60
- A61
- A62
- A63
- A64
- A65
- A66
- A67
- A68
- A69
- A70
- A71
- A72
- A73
- A74
- A75
- A76
- A77
- A78
- A79
- A80
- A81
- A82
- A83
- A84
- A85
- A86
- A87
- A88
- A89
- A90
- A91
- A92
- A93
- A94
- A95
- A96
- A97
- A98
- A99
- A100



# LEICESTER South